



Creating healthy spaces



Invisivent[®] *EVO* HR

The most discrete, self-regulating and sound absorbing overframe ventilator for high rise applications

Invisivent®^{EVO} HR

Introduction

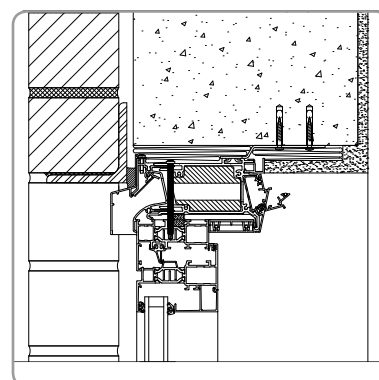
The new Invisivent®^{EVO} HR provides the ideal solution for wind-impacted applications such as high-rise buildings (up to 1200 Pa) and apartment buildings on the coast. The Invisivent®^{EVO} HR contains acoustic material, that muffles external noises as much as possible (e.g. wind, seagulls, traffic), which increases user comfort. The presence of various types of sound-damping foam in the inside profile provides 3 possible levels of sound insulation (Basic, High or Ultra). In addition to that, the rain cap, which is mounted as standard, ensures perfect water-resistance in even the most extreme conditions. Extra mounting screws and clips guarantee satisfactory stability and sturdiness of the entire window. The unique Invisivent®^{EVO} HR combines its functionality with maximum respect for the architecture since it can be positioned on the window frame, behind the wall.

Product

- Ideal for wind-impacted applications (coast & high-rise building situations)
- Increased comfort due to integrated acoustic insulation
- Rain cap guarantees perfect waterproofing up to 1200 Pa
- Extra mounting screws guarantee good stability
- Extra clips in the inside profile ensure perfect closure of the inside flap for wind-impact up to 1000 Pa
- Reinforcement plates in the body of the box guarantee good stability of window and vent
- Easy maintenance: removable inside profile and acoustic foam
- Can be used on all types and depths of window (aluminium, wood, PVC)
- Manual, cord, rod and motor operation possible
- Installation above the window frame behind wall so that the surface area of the glass is not reduced

Technical characteristics

	Invisivent® ^{EVO} HR Basic	Invisivent® ^{EVO} HR High	Invisivent® ^{EVO} HR Ultra
Ventilation figures			
Q at 1 Pa	10,6 l/s/m	7,3 l/s/m	5,5 l/s/m
Q at 2 Pa	57,2 m³/h/m	41,7 m³/h/m	32,8 m³/h/m
Q at 2 Pa	15,9 l/s/m	11,6 l/s/m	9,1 l/s/m
Water-tightness in closed position	up to 1200 Pa	up to 1200 Pa	up to 1200 Pa
Water-tightness in open position	up to 250 Pa	up to 250 Pa	up to 250 Pa
Thermally broken	yes	yes	yes
U-value	2,0 W/m².K	2,2 W/m².K	2,2 W/m².K
F-value	0,80	0,81	0,81
Control	16 positions	16 positions	16 positions
Self-regulating	yes	yes	yes
Equivalent area	13489 mm²/m	9349 mm²/m	7016 mm²/m
Airflow in closed position at 50Pa <15%	yes	yes	yes
Insect mesh	yes	yes	yes
Comfort			
Sound reduction $D_{n,e,w}$ (C;C _v) in open position	34 (0;-1) dB	39 (0;-1) dB	42 (0;-2) dB
Sound reduction $D_{n,e,w}$ (C;C _v) in closed position	57 (-1;-4) dB	62 (-2;-6) dB	64 (-1;-4) dB
Size			
Glass reduction	0 mm	0 mm	0 mm
Height	65 mm	65 mm	65 mm
Window depths	50 up to 184 mm	50 up to 184 mm	50 up to 184 mm



Dealer



RENSON® reserves the right to make technical changes to the products shown. The latest brochures may be downloaded from www.renson.eu

RENSON® Export Department

Tel. +32 (0)56 62 71 04 • export@renson.net



N.V. RENSON® Ventilation S.A.
IZ 2 Vijverdam • Maalbeekstraat 10 • B-8790 Waregem • Belgium
Tel. +32 (0)56 62 71 11 • Fax +32 (0)56 60 28 51
export@renson.net • www.renson.eu



Creating healthy spaces