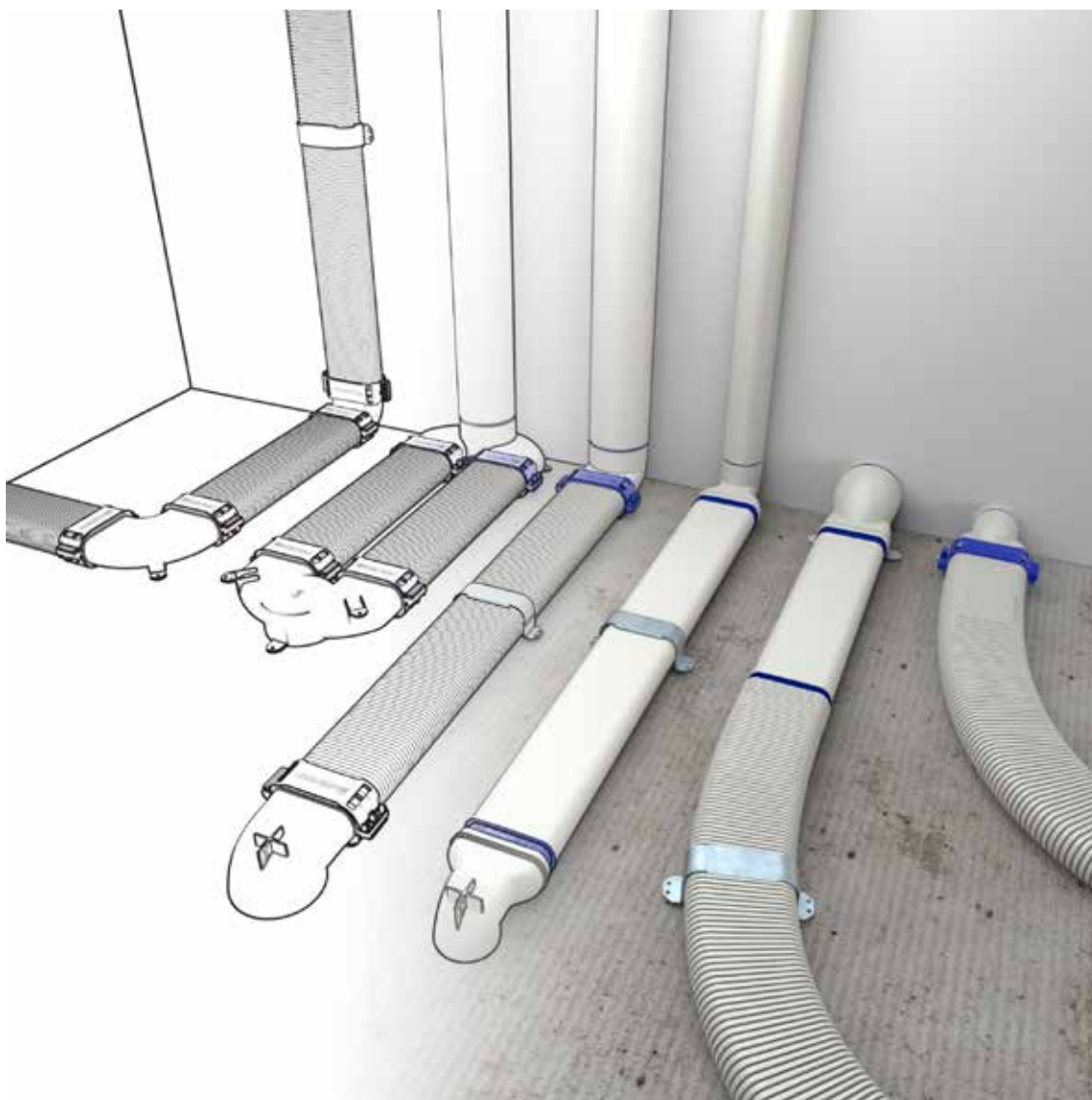


EASYFLEX®

Your guarantee for flow, airtightness, & acoustic comfort





THE IMPORTANCE OF VENTILATION

Ventilation is an essential part of today's living experience. Every ventilation system aims to protect your home or building against moisture, mould, and unpleasant odours. It is important that all components of a ventilation system are perfectly matched to each other to achieve this. The ducts and vents also play a very important role in addition to a high-performance ventilation unit. High-quality ductwork will provide a simpler adjustment and a higher level of comfort for the end customer.

VENTILATION: GOOD FOR OCCUPANT AND THE HOME

Contrary to popular belief, indoor air quality is eight times worse, on average, than outdoor air quality. Because the focus is increasingly on energy-efficient and airtight construction, we sometimes forget that moisture and pollutants such as CO₂ and VOC accumulate in our homes. Instead of supplying fresh air, we live/work/study in polluted air. This creates an unhealthy indoor climate. A poor indoor climate can be harmful to your health in the long run. Difficulty in breathing, eye irritation, headaches, allergies, and loss of concentration are just a few of the possible consequences. In addition, too much moist air leads to odours, condensation, and the formation of mould. Therefore, it is extremely important to ensure efficient, continuous ventilation.

DEMAND-DRIVEN VENTILATION

Renson® has decided to go a step further than conventional ventilation systems. Humans cannot detect changes in air quality through the senses. This means that we cannot tell when certain air pollutants reach concentrations that are too high. We therefore cannot expect the user of a space to determine the level of ventilation required to achieve a healthy indoor air quality. This makes it very important to be able to automatically adjust the ventilation level to the effective ventilation requirements. This is done using intelligent sensors that can adapt to different situations at any time of the day. If the air quality is good indoors, then the ventilation level will automatically decrease. This also results in energy savings of 30 to 50%!





RENSON® TOTAL CONCEPT

Renson® has all the components needed to always create a healthy and pleasant indoor climate. In addition to ventilation systems, we also offer sun protection, window ventilation, transfer grilles, roof ducts, vents, and air ducts.

The Easyflex air ducts can be combined with any type of ventilation system and in almost any home or building. Thanks to their large dimensions, it is easy to achieve 57 m³/h at a low air velocity of 2.5 m/s. A high flow rate at a low air velocity ensures that the noise production over the entire system decreases significantly.

The dimensions and material are as important as the design. Easyflex is made of highly flexible PE plastic with an outer diameter of 140 x 64 mm and an equivalent inner diameter of 90 mm. The smooth inner wall is equipped with antistatic and antibacterial additives to prevent dust accumulation and bacterial outbreaks. Due to the limited installation height, the Renson® Easyflex air ducts can be easily installed in scree, concrete, or false walls and ceilings.





WHAT DIFFERENCE DOES RENSON® EASYFLEX MAKE?

The quality of the product and the comfort for the resident are two very important aspects that Renson® always puts first when developing a product.



AIRTIGHTNESS CLASS D

The unique coupling system ensures an almost perfect level of airtightness. The coupling piece—with integrated double rubber gaskets—is pushed into the flexible duct and clamped in place with a quick-release mechanism. The result is an airtight whole. The quick-release mechanism can be anchored into the ground so that the whole definitely cannot move. The Easyflex duct system is classified at airtightness Class D, i.e. the best airtightness. This means that leak losses in the system are three times less than that of Class C.



FLOW RATE GUARANTEE

A larger diameter was consciously chosen in the design of the Easyflex flexible ductwork. This enables the transportation of a large ventilation flow rate [57 m³/h] at lower air velocities [2.5 m/s]. This dimensioning, combined with excellent airtightness ensures that the desired flow rate is definitively achieved in each room [provided the placement requirements are duly respected].



ACOUSTIC COMFORT

The larger dimensioning of the air ducts also improves the acoustic comfort since the risk of whistling resulting from high air velocities is drastically reduced, after all. In addition, the extraction grilles in the rooms with a required flow rate of 50 m³/h are equipped with sound-damping foam in order to further limit the throttling sound in the extraction grilles. The design of the vent connections also contributes to an increase in acoustic comfort. A pressure drop is created at the transition from the flat flexible air duct to the vent (Ø 90 > Ø 125), which results in an extra slow velocity of the air flow over the extraction grille.



EUROPEAN EUROVENT LABEL

The Renson® Easyflex air ducts are the only semi-flexible ducts to have been awarded this European quality label.

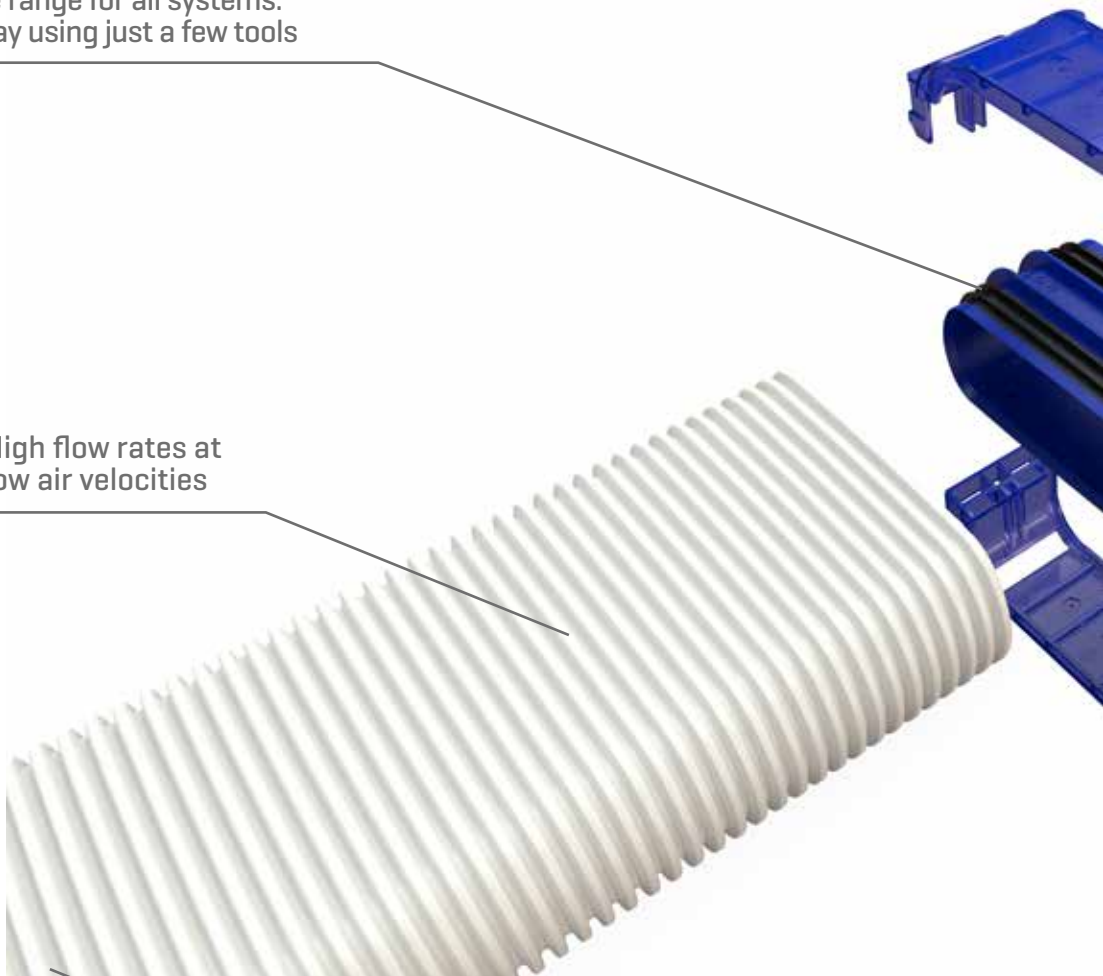
Renson® guaranteed that the required flow rates will be achieved in every room if you combine the Easyflex air ducts with any Renson® ventilation solution and respect the installation instructions. Moreover, this is done in a pleasant and quiet way.

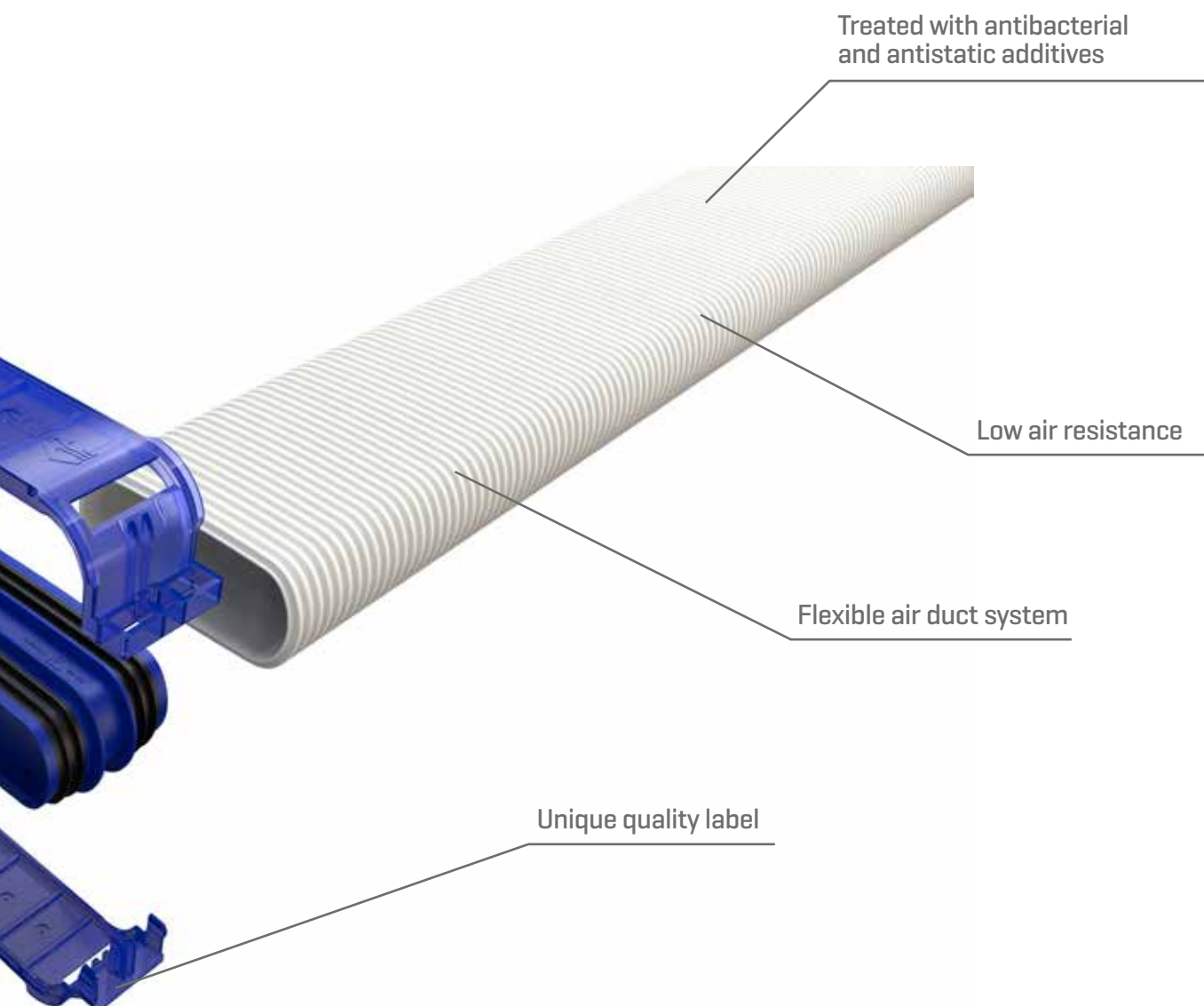
YOUR GUARANTEE FOR AIR FLOW, AIRTIGHTNESS, & ACOUSTIC COMFORT

Complete range for all systems:
Plug & play using just a few tools

High flow rates at
low air velocities

Quieter operation of the system





Easy installation:

- ☑ Limited height: less space needed in screed, insulation layer, concrete, or false wall/ceiling

PARTS

THE FLEXIBLE DUCT

Thanks to its limited height (64 mm), the flexible Easyflex PE air duct can be installed easily in screed (top layer of 9 to 10 cm) or in a false wall. You can also pour concrete over the Easyflex air duct. The design of the air duct ensures that the pressure loads are optimally distributed over the duct so that virtually no deformation occurs under pressure loads.



In concrete



In insulation layer



In false wall

BENDS

Easyflex's flexible nature ensures that the air duct itself can go around bends with a radius of > 400 mm. For sharp bends, there is a 90° horizontal and vertical bend piece. This means that on-site obstacles can be avoided quickly and easily.



Bend $r > 400$



Vertical bend 90°



Horizontal bend 90°

COUPLING

Easyflex guarantees excellent airtightness thanks to its unique coupling system. A coupling piece with integrated gaskets is used to connect two air ducts or one air duct to a transition piece. To ensure airtightness, a quick-release fastener is placed over the whole so that everything is under tension and seals perfectly airtight. Risers can also be connected in a similar way.



RISER

It is possible to bridge the vertical distance to the ventilation system by means of circular risers. For rooms with an extraction flow rate of $< 50 \text{ m}^3/\text{h}$, it is best to choose a riser of $\varnothing 80 \text{ mm}$. Spaces with a flow rate of $> 50 \text{ m}^3/\text{h}$ should be connected to one of $\varnothing 125 \text{ mm}$. The distance to the ventilation system can also be bridged with the flexible ducts.



SECURING

The Easyflex ducts can be anchored to the substrate in two ways. On the one hand, the quick-release fasteners can be anchored to the ground by screwing them into place or by anchoring them using a firing pin. This ensures that the coupling of components is always securely fastened and remains immobile. On the other hand, it is recommended to install a metal fastening bracket every one and a half metres.



Firing pin



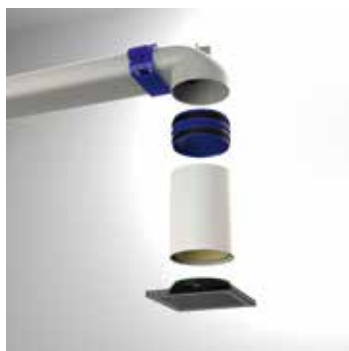
Screws



Fastening bracket

VENT CONNECTIONS

The Renson® extraction grilles and SQair vents can be seamlessly connected to the Easyflex air duct system. The extraction grilles are available in two diameters: $\varnothing 80 \text{ mm}$ for rooms with an extraction flow rate of $\leq 50 \text{ m}^3/\text{h}$ and $\varnothing 125 \text{ mm}$ for rooms with an extraction flow rate of $\geq 50 \text{ m}^3/\text{h}$. SQair vents can always be connected to $\varnothing 125 \text{ mm}$. Both can be connected directly to the vent outlet if it is installed in a Gyproc wall. When the extraction grille is placed in a vault, a spacer (which can be sawed to fit) is placed on the length of the extraction grille.





TECHNICAL SPECIFICATIONS



Flexible duct
G0013110 (15 m)



Fixed flat oval duct
G0013126 (3 m)



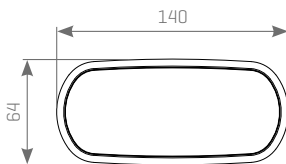
Flexible coupling piece
G0013139



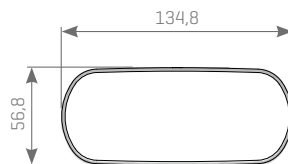
Riser Ø 125
G0013130 (3 m)
G0013132 (0,25 m)



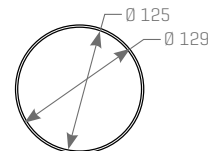
Riser Ø 80
G0013131 (3 m)
G0013133 (0,25 m)



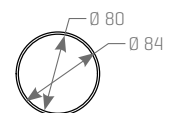
Flexible duct



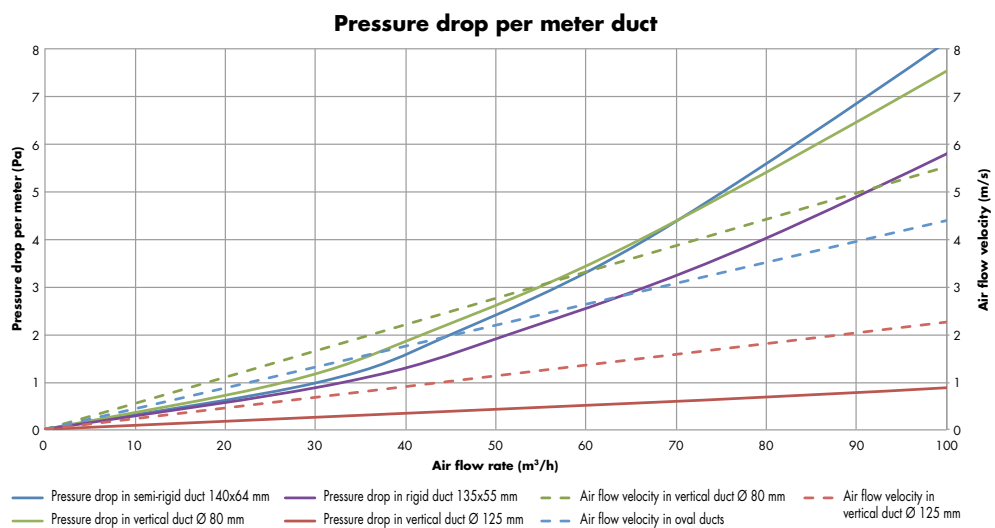
Flat oval duct



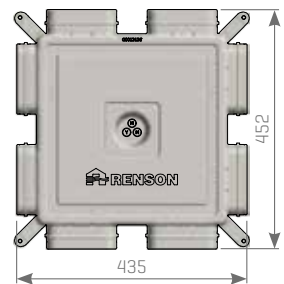
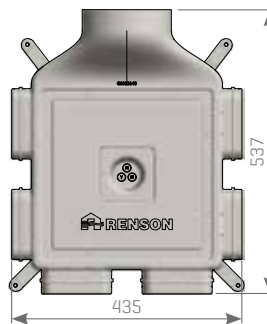
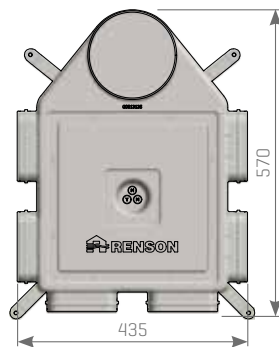
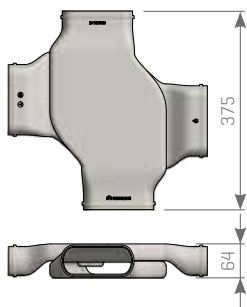
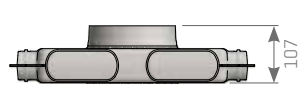
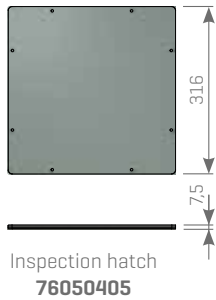
Riser Ø 125



Riser Ø 80



TECHNICAL DRAWINGS

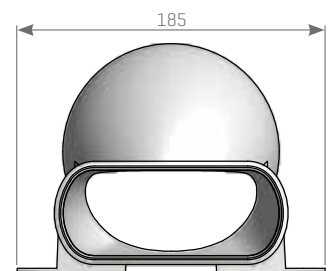
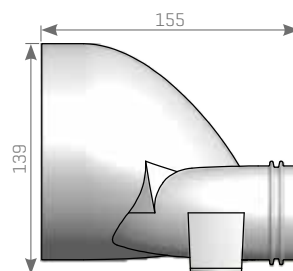
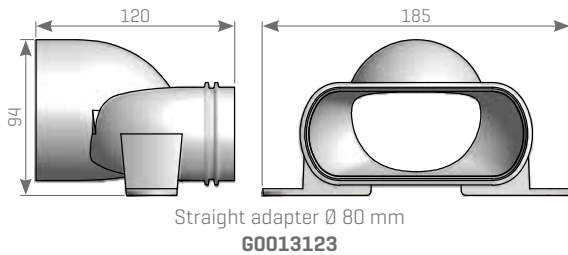


Crossbar pivot
60013145

Angled distribution box 160 mm
60013135

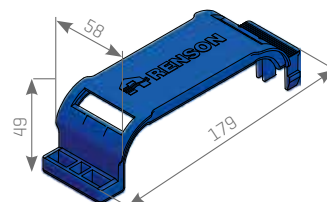
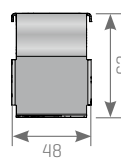
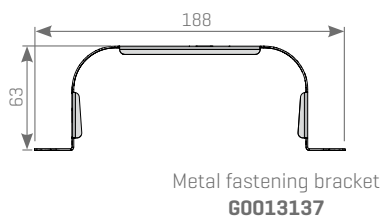
Distribution box straight 160 mm
60013140

Distribution box 8 connections
60013136



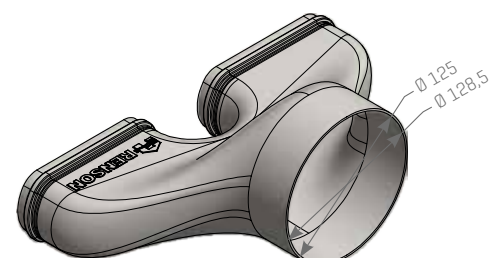
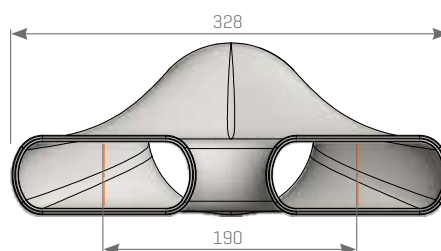
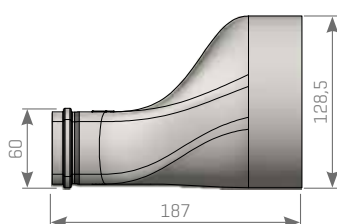
Straight adapter Ø 80 mm
60013123

Straight adapter Ø 125 mm
60013124

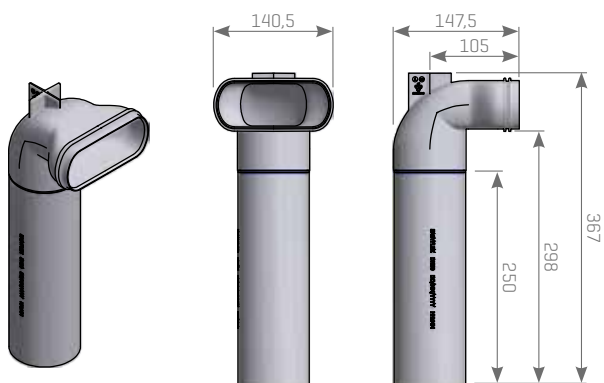


Metal fastening bracket
60013137

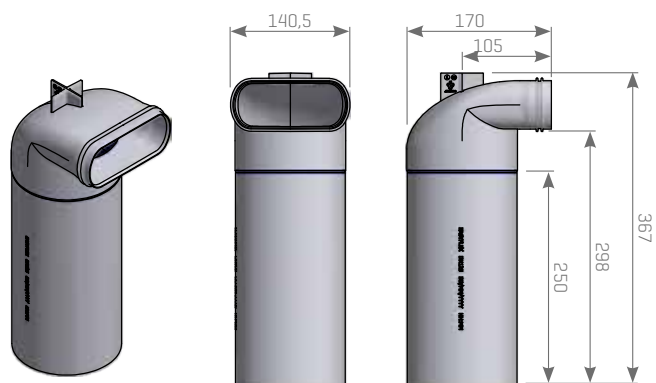
Quick-release
60013112



Straight double adapter
60013141



Angled concrete duct kit Ø 80
G0013146



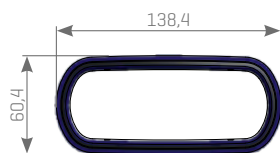
Angled concrete duct kit Ø 125
G0013147



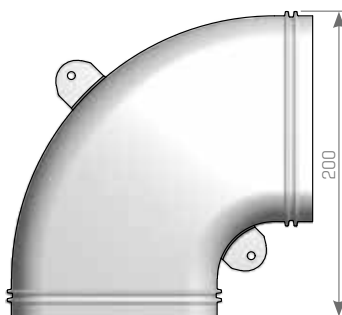
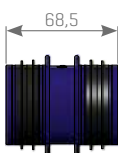
Coupling piece Ø 80
G0013121



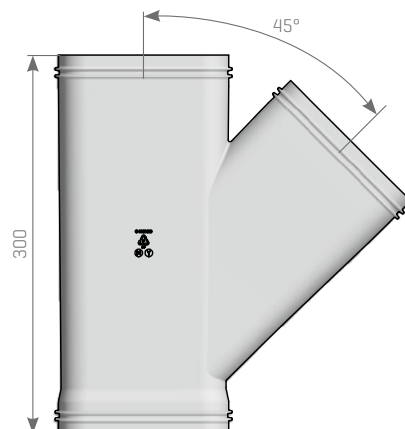
Coupling piece Ø 125
G0013122



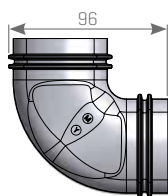
Coupling piece flat oval
G0013111



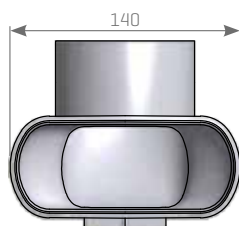
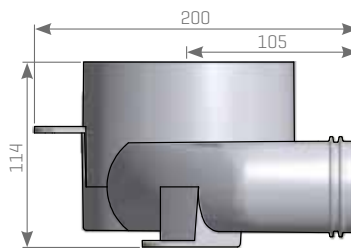
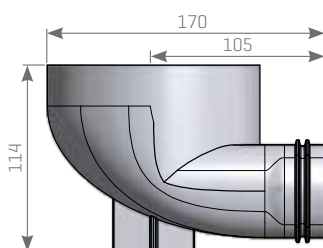
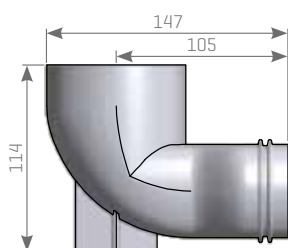
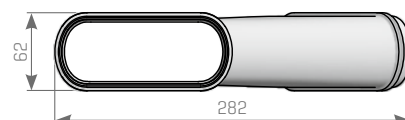
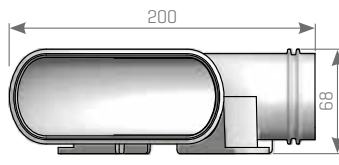
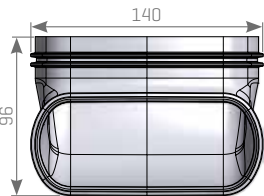
Horizontal bend 90°
G0013113



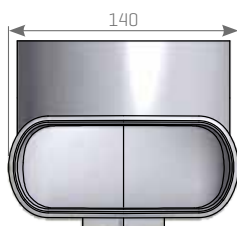
Y piece
G0013120



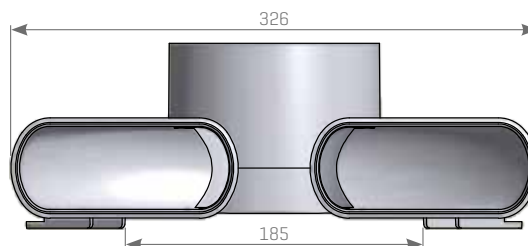
Vertical bend 90°
G0013114



Vent connection Ø 80 mm
G0013116



Vent connection Ø 125 mm
G0013117



Double vent connection Ø 125 mm
G0013118



RENSON® Headquarters
Maalbeekstraat 10, IZ 2 Vijverdam, B-8790 Waregem, Belgium
Tel. +32 (0)56 62 71 11
info@renson.eu
www.renson.eu

