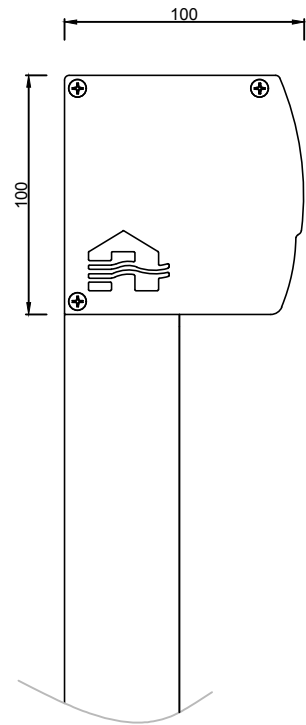
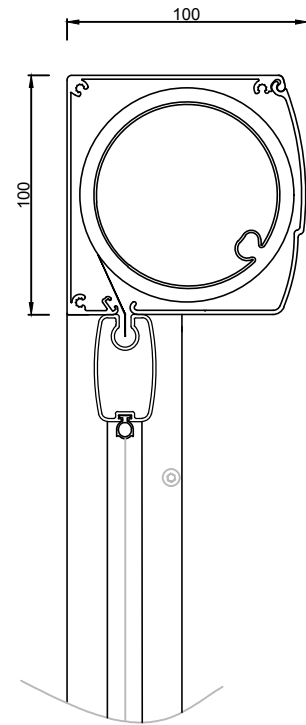


This drawing is property of NV RENSON, and may not be copied or shown to thirds without written permission.

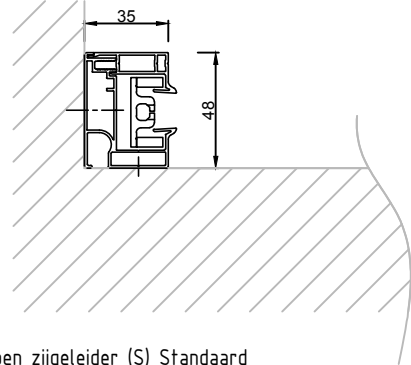
Zijaanzicht
Vue de côté
Side view
Seitenansicht
Vista lateral



Doorsnede
Section
Cross section
Section
Sección

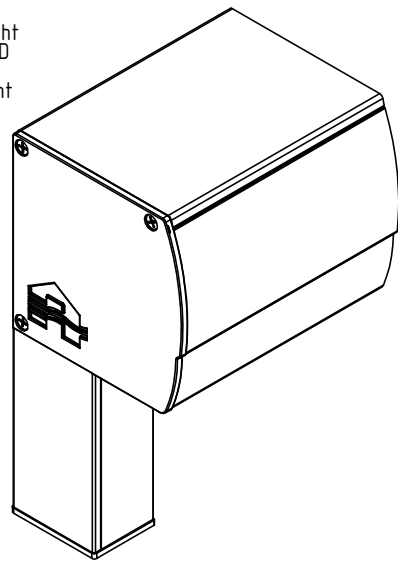


Bovenaanzicht
Vue de dessus
Top view
Obenansicht
Vista desde arriba



Open zijgeleider (S) Standaard
Coulisse ouvert (S) Standard
Open side channel (S) Standard
Seitenführung offen (S) Standard
Guía lateral abierta (S) Estándar

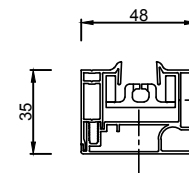
3D aanzicht
Vue en 3D
3D-View
3D-Ansicht
Vista 3D



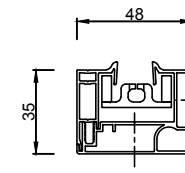
CF2

CF1

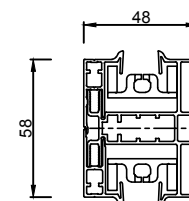
Afgewerkte hoogte
Hauteur finie
Finished height
Fertige Höhe
Altura acbada



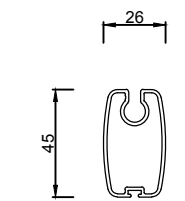
Open zijgeleider (S) Standaard
Coulisse ouvert (S) Standard
Open side channel (S) Standard
Seitenführung offen (S) Standard
Guía lateral abierta (S) Estándar



Gesloten zijgeleider (G)
Coulisse fermée (G)
Closed side channel (G)
Seitenführung geschlossen (G)
Guía cerrada (G)



Koppel zijgeleider (K)
Coulisse d'accouplement (K)
Coupling side channel (K)
Koppel-Führung (K)
Guía lateral de acoplamiento (K)



Onderlat softline
Barre de charge softline
Bottom rail softline
Die Endschiene softline
Perfil contrapeso softline

Montagesituatie 6 - voorbouw voor het raam binnen
Montage 6 - avant corps: devant le châssis à l'intérieur
Installation method 6 - surface-mounted: inside, in front of the window
Einbauweise 6 - vorbau: drinnen vor dem rahmen
Tipo de montaje 6 - montaje delante de la ventana en el interior



RENSON®
Creating healthy spaces

Industriezone "Flanders field"
8790 Waregem (Belgium)
Tel. 056/62.71.11 Fax. 056/60.28.51

Drawn
msple

Date
2/10/2017

Scale
1/3

Fixscreen® 100^{EVO} Softline

Version
1

Formaat
A3

MS6/M6/EW6/IM6/TdM6

Page
1/1

