

A

B

C

D

E

F

A

B

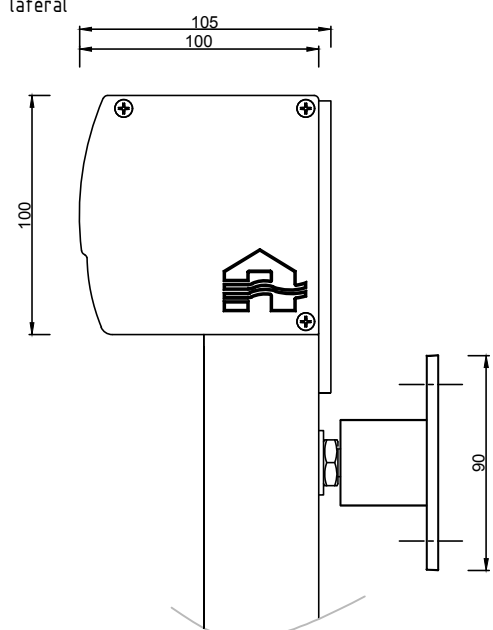
C

D

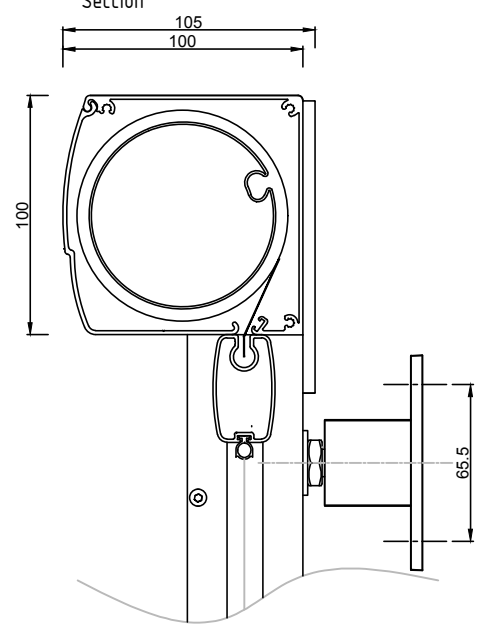
E

F

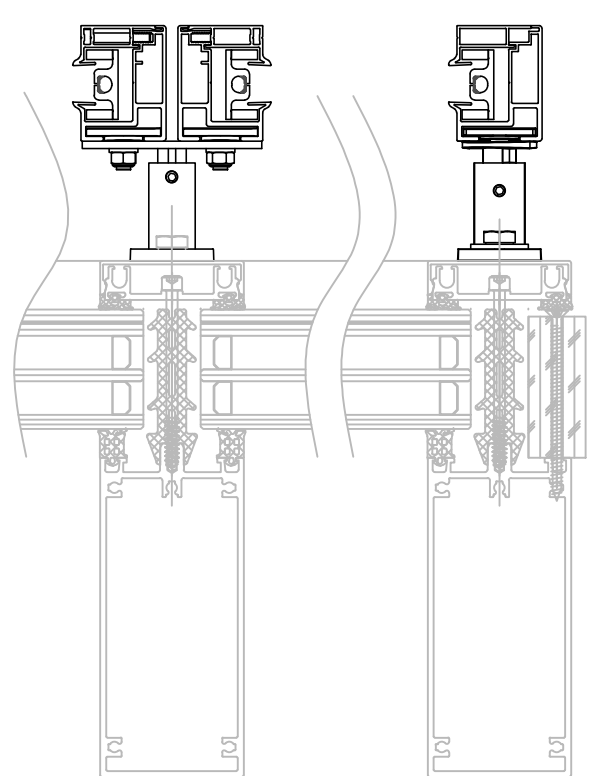
Zijaanzicht
Vue de côté
Side view
Seitenansicht
Vista lateral



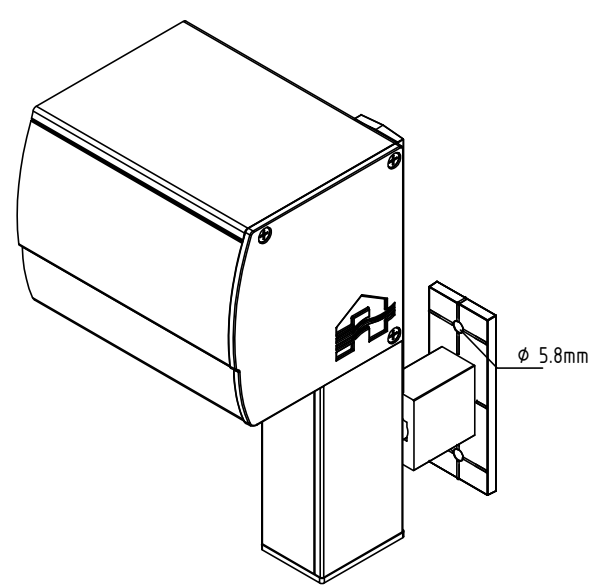
Doorsnede
Section
Cross section
Section
Sección



Bovenaanzicht
Vue de dessus
Top view
Obenansicht
Vista desde arriba



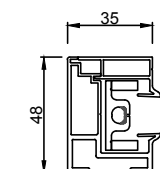
3D aanzicht
Vue en 3D
3D-View
3D-Ansicht
Vista 3D



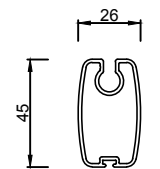
Afgewerkte hoogte
Hauteur finie
Finished height
Fertige Höhe
Altura acabada

CF1

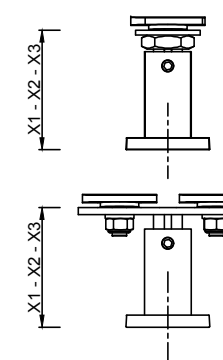
CF2



Zijgeleider
Coulisse
Side channel
Seitenführung
Guía lateral

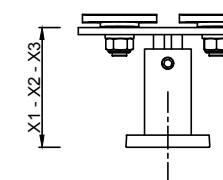


Onderlat
Barre de charge
Bottom rail
Die Endschiene
Perfil contrapeso



Montagevoet enkel
Pied de montage simple
Mounting foot single
Montagefuß einzelanlage
Pie de montaje sólo

X1: 55mm ±5mm
X2: 100mm ±5mm
X3: 150mm ±5mm



Montagevoet aaneengeschakeld
Pied de montage côte à côte
Mounting foot linked
Montagefuß verkettetes system
Pie de montaje doble concatenado

Montagesituatie 1+ - voorbouw, geplaatst op een afstand t.o.v.de vliesgevel
Montage 1+ - Avant-corps, placé à une certaine distance par rapport à la façade (rideau)
Installation method 1+ - surface-mounted, placed at a distance relative to the curtain wall
Einbauweise 1+ - Vorbau, wird in einem bestimmten abstand zur (vorhang) fassade montiert
Tipo de montaje 1+ - Montaje por delante montado a cierta distancia del muro cortina



RENSON®
Creating healthy spaces
Industriezone "Flanders field"
8790 Waregem (Belgium)
Tel. 056/62.71.11 Fax. 056/60.28.51

Drawn by msple	Date 2/10/2017	Scale 1/3
Fixscreen® 100 ^{EVO} Softline		Version 1
MS1+/M1+/EW1+/IM1+ vliesgevel/mur-rideau/curtain wall/fassade aus glas/muro cortina		Page 1/1

