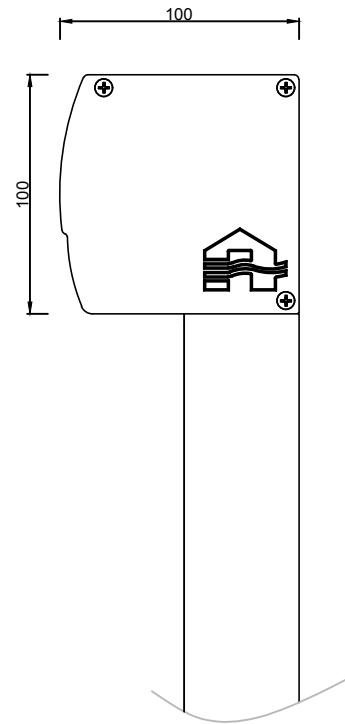
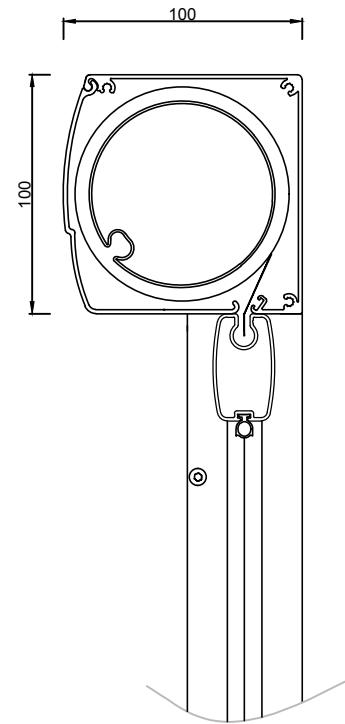


This drawing is property of NV RENSON, and may not be copied or shown to thirds without written permission.

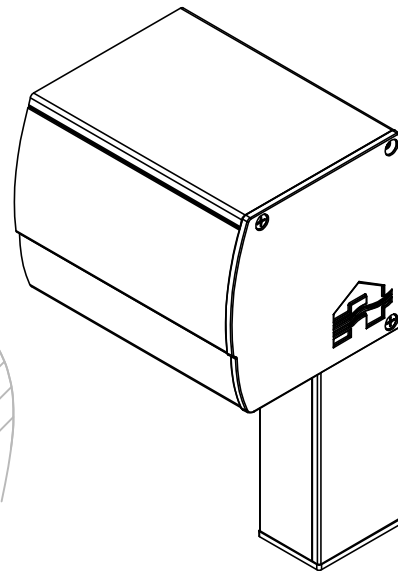
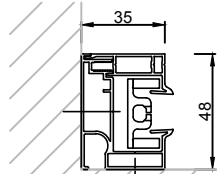
Zijaanzicht  
Vue de côté  
Side view  
Seitenansicht  
Vista lateral



Doorsnede  
Section  
Cross section  
Section  
Sección



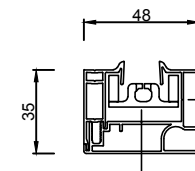
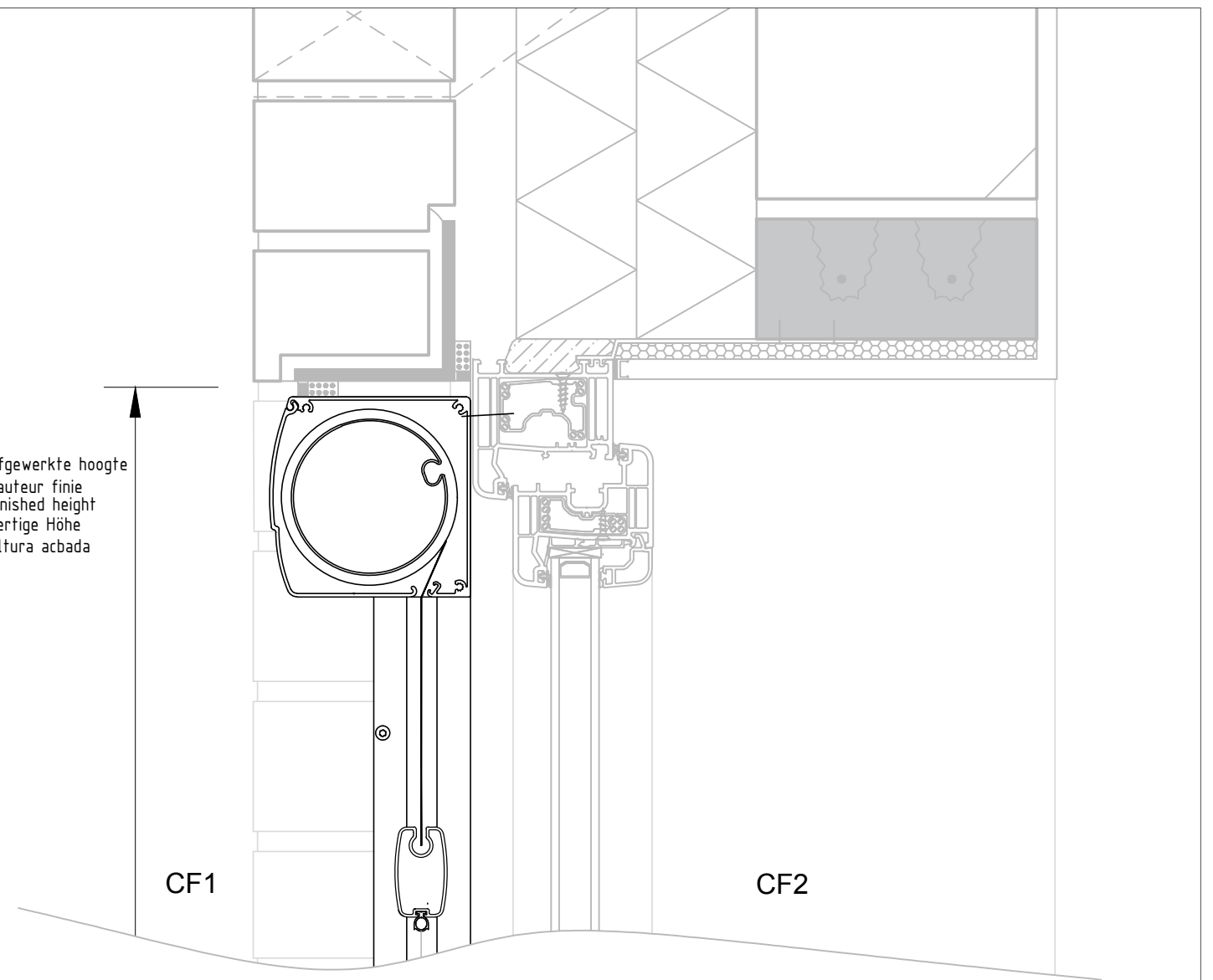
Bovenaanzicht  
Vue de dessus  
Top view  
Obenansicht  
Vista desde arriba



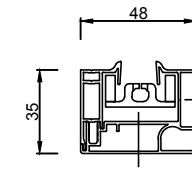
3D aanzicht  
Vue en 3D  
3D-View  
3D-Ansicht  
Vista 3D

Open zijgeleider (S) Standaard  
Coulisse ouvert (S) Standard  
Open side channel (S) Standard  
Seitenführung offen (S) Standard  
Guía lateral abierta (S) Estándar

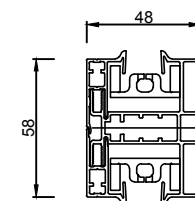
Afgewerkte hoogte  
Hauteur finie  
Finished height  
Fertige Höhe  
Altura acabada



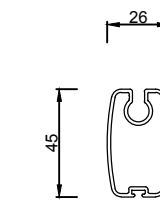
Open zijgeleider (S) Standaard  
Coulisse ouvert (S) Standard  
Open side channel (S) Standard  
Seitenführung offen (S) Standard  
Guía lateral abierta (S) Estándar



Gesloten zijgeleider (G)  
Coulisse fermée (G)  
Closed side channel (G)  
Seitenführung geschlossen (G)  
Guía cerrada (G)



Koppel zijgeleider (K)  
Coulisse d'accouplement (K)  
Coupling side channel (K)  
Koppel-Führung (K)  
Guía lateral de acoplamiento (K)



Onderlat softline  
Barre de charge softline  
Bottom rail softline  
Die Endschiene softline  
Perfil contrapeso softline

Montagesituatie 1 - voorbouw voor het raam buiten  
Montage 1 - avant-corps: devant le châssis à l'extérieur  
Installation method 1 - surface-mounted: outside, in front of the window  
Einbauweise 1 - vorbau: draussen vor dem rahmen  
Tipo de montaje 1 - montaje delante de la ventana en el exterior



**RENSON®**  
Creating healthy spaces

Industriezone "Flanders field"  
8790 Waregem (Belgium)  
Tel. 056/62.71.11 Fax. 056/60.28.51

Drawn By  
msple

Date  
2/10/2017

Scale  
1/3

Fixscreen® 100<sup>EVO</sup> Softline

Version  
1

Formaat  
A3

MS1/M1/EW1/IM1/TdM1

Page  
1/1

