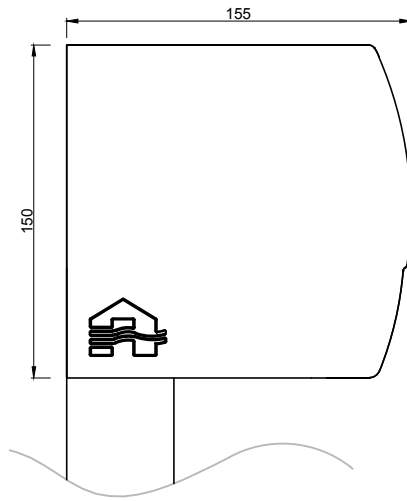
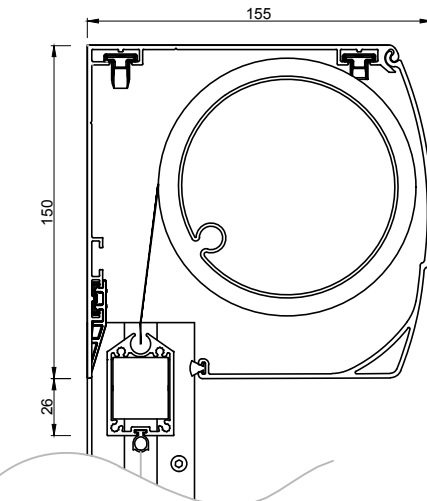


This drawing is property of NV RENSON, and may not be copied or shown to thirds without written permission.

Zij aanzicht
Vue de côté
Side view
Seitenansicht
Vista lateral



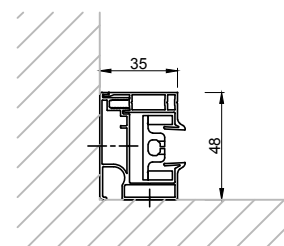
Doorsnede
Section
Cross section
Section
Sección



2800mm < H ≤ 6000mm

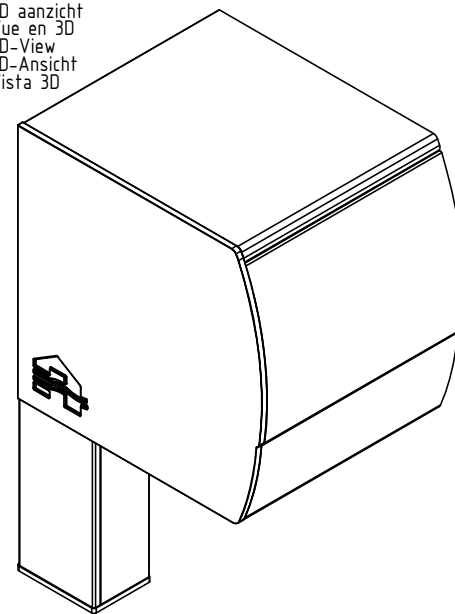
- onderlat past gedeeltelijk in de kast
- la barre de charge disparaît dans le caisson partiellement
- bottom rail disappears into the box partially
- Endschiene passt in die Kassette teilweise
- Sección diseño square: perfil contrapeso cabe parcialmente en el cajón

Bovenaanzicht
Vue de dessus
Top view
Obenansicht
Vista desde arriba



Open zijgeleider (S) Standaard
Coulisse ouvert (S) Standard
Open side channel (S) Standard
Seitenführung offen (S) Standard
Guía lateral abierta (S) Estándar

3D aanzicht
Vue en 3D
3D-View
3D-Ansicht
Vista 3D



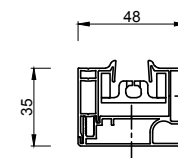
CF2

Afgewerkte hoogte
Hauteur finie
Finished height
Fertige Höhe
Altura acabada

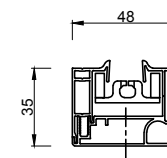
H ≤ 2800mm

- onderlat past volledig in de kast
- la barre de charge disparaît dans le caisson complètement
- bottom rail disappears into the box completely
- Endschiene passt in die Kassette vollständig
- sección diseño square: perfil contrapeso cabe completamente en el cajón

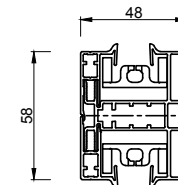
CF1



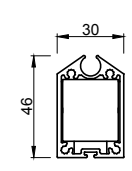
Open zijgeleider (S) Standaard
Coulisse ouvert (S) Standard
Open side channel (S) Standard
Seitenführung offen (S) Standard
Guía lateral abierta (S) Estándar



Gesloten zijgeleider (G) Standaard
Coulisse fermée (G) Standard
Closed side channel (G) Standard
Seitenführung geschlossen (G) Standard
Guía cerrada (G) Estándar



Koppel zijgeleider (K) Standaard
Coulisse d'accouplement (K) Standard
Coupling side channel (K) Standard
Koppel-Führung (K) Standard
Guía lateral de acoplamiento (K) Estándar



Onderlat
Barre de charge
Bottom rail
Die Endschiene
Perfil contrapeso

Montagesituatie 6 - voorbouw voor het raam binnen
Montage 6 - avant corps: devant le châssis à l'intérieur
Installation method 6 - surface-mounted: inside, in front of the window
Einbauweise 6 - vorbau: drinnen vor dem rahmen
Tipo de montaje 6 - montaje delante de la ventana en el interior



RENSON
Creating healthy spaces

Industriezone "Flanders field"
8790 Waregem (Belgium)
Tel. 056/62.71.11 Fax. 056/60.28.51

Drawn
msple

Date
2/10/2017

Scale
1/3

Fixscreen® 150^{EV0} Softline

Version
1

Formaat
A3

MS6/M6/EW6/IM6/TdM6

Page
1/1

