



Renson Indoor – Façade

Changes to price list January 2022

Date: 1 November 2021

Dear customer,

In order to stay up to date with the latest colour trends for window profiles, the Renson Standard colour list is being adjusted. This list currently includes +/- 300 colours (with corresponding powder codes).

From 1 January 2022, 10 new colours will be added and 14 colours will be removed from the list.

The Renson Standard colours are always guaranteed to be **in stock** and are sold **with no colour surcharge**.

Specifically, the following 10 colours being added to the Renson Standard colour range are:

Colour code	Description	RAL	Finish	Supplier	Powder code
STR 0628	Syntha Pulvin RAL 7016 Fine textured Matte	RAL 7016	Texture	INVER	18895
STR 0410	FINE TEXTURE BROWN 1247	-	Texture	AXALTA	AE03058124720
STR 0519	FINE TEXTURE SIENNE	-	Texture	AXALTA	AE03448027121
STR 0540	FINE TEXTURE BRONZE BG600	-	Texture	AXALTA	AE03217060020
V9001260	RAL 7039 Smooth Matt	RAL 7039	Matt	TIGER	029/73213
V9000656	IGP-DURA face Smooth finish Matt RAL 9004	RAL 9004	Matt	IGP	5803A90040A00
V9000700	Extra Matt ANODIC BROWN Polyester Architectural AE	-	Matt	AXALTA	AE20108000420
V9001185	Matt smooth Anodic champagne	-	Matt	AXALTA	AE20101000220
V9001198	C34 Braun Metallic Matt	-	Matt	TIGER	029/65650
V9000362	DB 701	DB 701	Glossy	IGP	5803E71382A10

The following 15 colours will be removed from the Renson Standard colour list, but will remain available as a stock colour (subject to an additional colour surcharge).

Colour code	Description	RAL	Finish	Supplier	Powder code
STR 0431	Fine Texture RAL 8000 GREEN BROWN Polyester Architectural AE	RAL 8000	Texture	AXALTA	AE03058800020
STR 0517	IGP-HWFclassic Deep matt Fine structure Carbon MCS-ESP S 10-55	-	Texture	IGP	591TE71319A30
V9001563	approx. RAL 1036 Pearl Gold Metallic Matt	RAL 1036	Matt	TIGER	029/90012
V9000681	INTERPON D2525 RAL 7021 Matt	RAL 7021	Matt	AKZO	YLV21F
V9000768	INTERPON D2525 - BRONZE 2525 Matt Metallic	-	Matt	AKZO	YW283F
V9001217	SYNTHA PULVIN SB M BROWN S1 RAL 8080	-	Matt	VALSPAR	M4K0021
V9001352	RAL Design 000 55 00 Matt Smooth	-	Matt	AXALTA	AE30007524027
V9001598	NCS-S 3502-Y Smooth Deep matt	-	Matt	IGP	4201A71828A10
V9001649	VEKA Dunkelgrau Deepmatt Smooth	-	Matt	IGP	4201A78051L10
V9001651	VEKA Braun Deepmatt Smooth	-	Matt	IGP	4201A83414L10
V9001520	IGP-DURA@face Smooth Silk Gloss RAL 7022	RAL 7022	Glossy	IGP	5807A70220S70
V9000804	RAL 9010 Smooth	RAL 9010	Glossy	AXALTA	AE80019107921
V9001261	INTERPON D1036 - BLANC Z068 Gloss Smooth	RAL 9010	Glossy	AKZO	RB650G
V9001042	INTERPON D1036 - RAL 9016 Satin Smooth	RAL 9016	Glossy	AKZO	SA716JR
V9001012	IGP-DURA@face Smooth Silk gloss RAL 9007	-	Glossy	IGP	5807E90070F10

NATURAL VENTILATION

Overframe window vents

Ventilation is becoming increasingly important to create and maintain a healthy indoor climate. What does the future bring?

1. Invisivent Air/Comfort with motor control

From 1 September 2021, Invisivent AIR/COMFORT can also be ordered with **motor control**. This motor control ensures the opening and closing of the inner cover and is integrated completely invisibly inside the Invisivent. From January 2022, the motor control option will also be included in the price lists.



2. High Rise as an option with Invisivent A/C ventilation

To clarify and simplify the Invisivent AIR/COMFORT range, the **“HR range” will no longer be offered separately**, but “HR” can be selected **as an option** for the standard models.

In concrete terms:

- Only the standard versions remain available on the website, with description, “High Rise version available”
- For E-reps, the number of models that can be ordered is reduced, whereby the customer can select “High-rise version” with the standard versions if desired
- The price lists are simplified by removing the redundant “High Rise” pages. The “High-rise version + 15%” remark is mentioned with the standard versions



Self-regulating (2Pa), basic reduction

Type	Invisivent Air Basic
Window depth	50-82mm
Self-regulating from	2Pa
Sound reduction	34 (0;-1) dB
High rise version	Surcharge : +15%

3. End of the EVO Era

From 1 January 2022, the **“old” Invisivent evo (nl)-range** will be almost completely **phased out**. In concrete terms, this implies that from January 2022:

- Invisivent evo products are no longer available to order
- No more new versions of the Invisivent evo price lists will be made available

There is an alternative for most models within the old evo range in the new AIR/COMFORT range:

EVO	AIR/COMFORT	
	Without mechanical extraction (2Pa)	With mechanical extraction (10 Pa)
Invisivent evo	Invisivent AIR Light	-
Invisivent evo HF	Invisivent AIR Light	-
Invisivent evo AK Basic	Invisivent AIR Basic	Invisivent COMFORT Basic
Invisivent evo AK High	Invisivent AIR High	Invisivent COMFORT High
Invisivent evo AK Ultra	TBC	Invisivent COMFORT Ultra
Invisivent evo AK Extreme	TBC	TBC
Invisivent evo AKD (Max)	TBC	TBC
Invisivent evo UT	-	Invisivent UT

We are carrying out further investigation into an equivalent for Invisivent Evo AK Extreme and AKD Max.

Window vents & Slotvents

1. Phasing out: Slimline and MultiTop

The **slimline** will definitively leave the slotvents range on 1 January 2022. This product had been marked “available until end of stock” for quite some time. It is still possible to place a final order. We can no longer accept orders for this product from 1 January 2022.

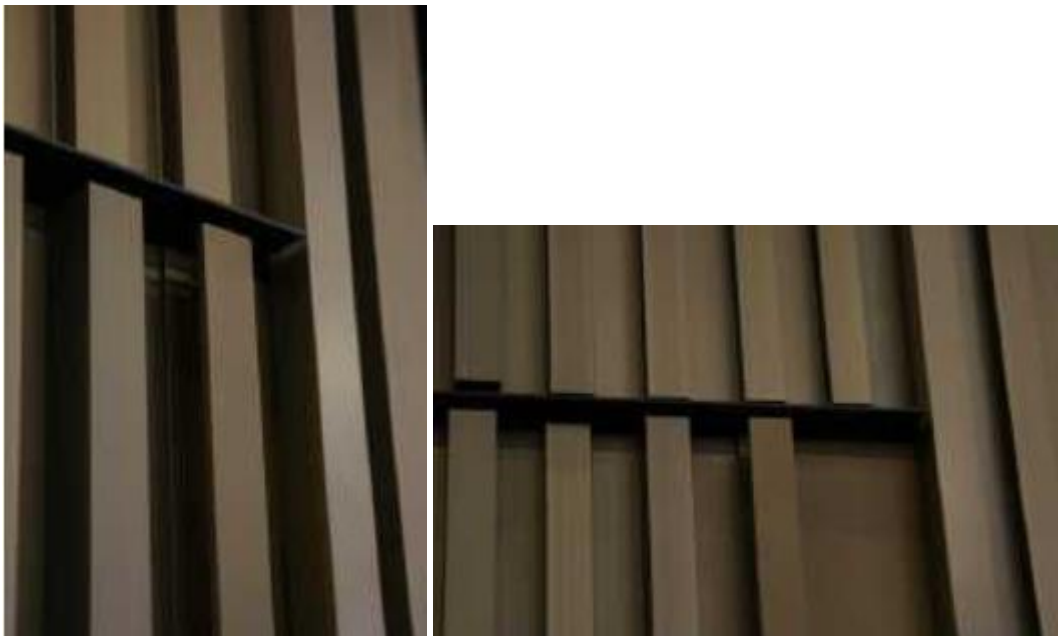
2. Slotvents : colour change standard colours

The **RAL1247** colour will no longer be available as a standard colour for the 485, 787AK, 478, 488, 489 slotvents. This means it will no longer be sold at the same price as a “standard RAL colour” and it will no longer be in stock at Renson. If a customer still wants to order this colour, this is only possible via customisation and at the price of a RAL special colour, with a delivery time of 20 working days.

LINARTE

1. NEW – Door handle

From now on, the seamless integration of a door in a façade is completed by the Linarte door handle.



2. Optimisation and extension of Linarte colour range

As part of the technical optimisation of our colour range, your favourite STR 0083 will soon also be available under an alternative number.

You can also contact us for an anodised look for the façade.

3. Optimisation of LED lighting

The LEDs in the range have been optimised in terms of aesthetics and have the same colour all around.

4. NEW – Parts catalogue

A parts catalogue will be included in your file with every quotation. This parts catalogue will give you a better overview of all the parts you need to finish your façade.



LOUVRES

Louvres

1. Table Louvres types 392 and 394 – minimum width adjustment

The minimum width has been changed from 55 mm to **80 mm**.
Dimensions smaller than 80 mm cannot be produced practically.

Louvres & louvre walls: parts

1. L.033HF

This product was listed as “available until end of stock” in the previous edition. L.033HF has now been removed from the price list.

2. 411/414/431/L.033

A number of profiles were replaced by profiles with the new design:

OLD				NEW
P0201810	L.033.01 blade 8	6000	Mill finish	P0202810
P0201813	L.033.01 blade 8	3000	Mill finish	P0202813
P0201814	L.033.01 blade 8	4000	Mill finish	P0202814
P0201815	L.033.01 blade 8	5000	Mill finish	P0202815
04111290	L.033.02 blade 7B	3000	Mill finish	P0202713
04111390	L.033.02 blade 7B	6000	Mill finish	P0202710
P0201916	L.033CL blade	6000	Mill finish	P0202910
P0201915	L.033CL blade	5000	Mill finish	P0202915
P0201914	L.033CL blade	4000	Mill finish	P0202914
P0202010	L.033CL.02 top blade	6000	Mill finish	P0202410
P0201936	L.033IM1 blade	6000	Mill finish	P0202930
P0201935	L.033IM1 blade	5000	Mill finish	P0202935
P0201934	L.033IM1 blade	4000	Mill finish	P0202934
P0201863	L.033.01 blade 8	3000	F1	P0202863
P0201864	L.033.01 blade 8	4000	F1	P0202864
P0201865	L.033.01 blade 8	5000	F1	P0202865
P0201860	L.033.01 blade 8	6000	F1	P0202860
04111291	L.033.02 blade 7B	3000	F1	P0202763
04111391	L.033.02 blade 7B	6000	F1	P0202760
P0201966	L.033CL blade	6000	F1	P0202966
P0201965	L.033CL blade	5000	F1	P0202965
P0201964	L.033CL blade	4000	F1	P0202964
P0202066	L.033CL.02 top blade	6000	F1	P0202466
P0201961	L.033IM1 blade	4000	F1	P0202961
P0201962	L.033IM1 blade	5000	F1	P0202962
P0201963	L.033IM1 blade	6000	F1	P0202960

The locking tool for blade type L.033 has also been adapted: old S0005767 – new S0005782.

3. L.050W

- Corner connector for frames: article G0000578 has been replaced by G0000498.
- Added new corner connector for blades: G0808022

Linus

1. L.033HF

This product was listed as “available until end of stock” in the previous edition. L.033HF has now been removed from the price list.

Thank you for the great partnership we have built up between our companies; we look forward to further co-operation.

Kind regards,

Your Renson team